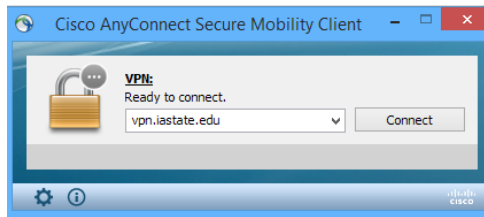
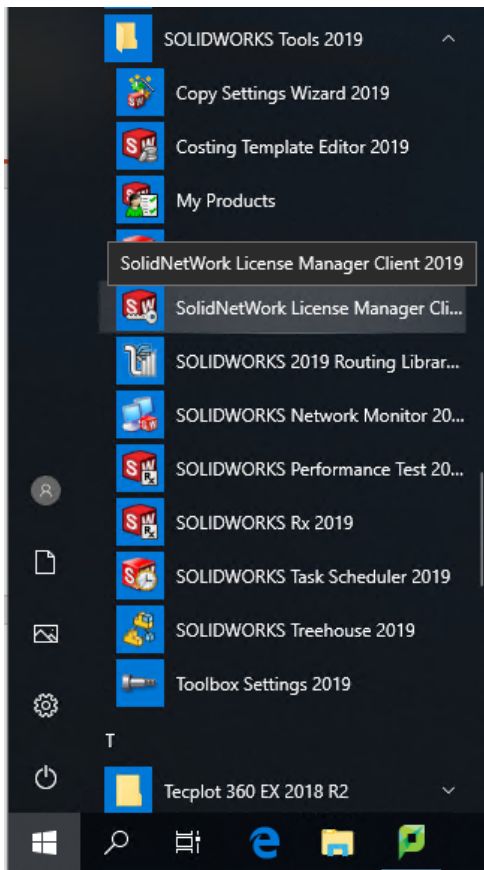


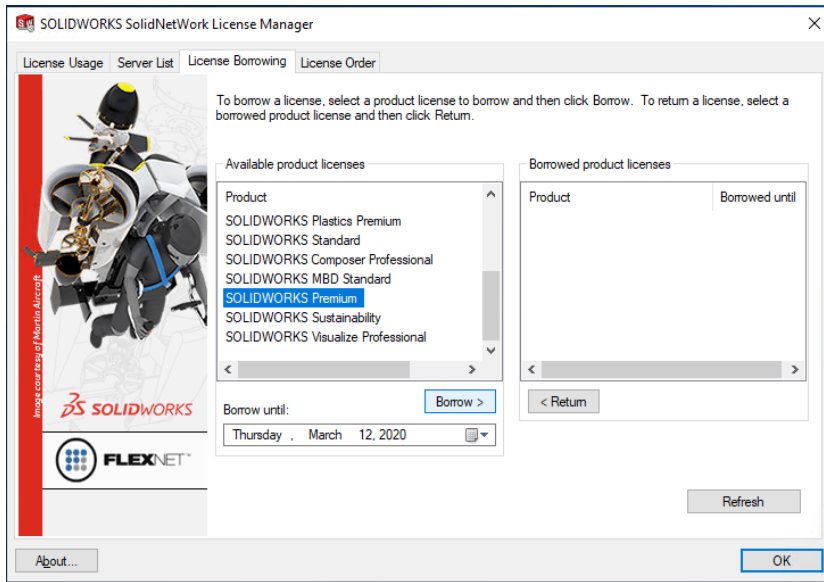
1. Connect to ISU VPN using Cisco AnyConnect.



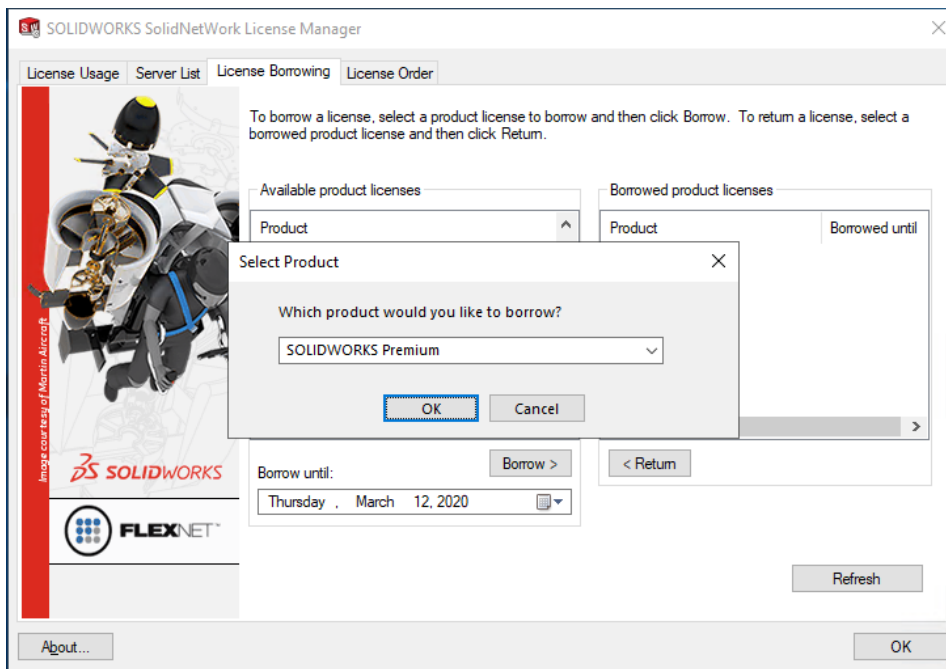
2. Go to Start Menu > SOLIDWORKS Tools 2019 and click **SolidNetWork License Manager Client**.



3. The SOLIDWORKS SolidNetWork License Manager will open. Click on the License Borrowing tab and scroll down the list and select the SOLIDWORKS Product you would like to borrow. The window should look like the picture below. Click the **Borrow >** button.



4. Once you click the *Borrow >* button you should get a Select Product window like shown in the picture below. Verify the product you want to borrow and click **OK**.



5. You should see the license that you borrowed under *Borrowed product licenses* in the Solidworks SolidNetWork License Manager like the picture shown. Click **OK** to exit

